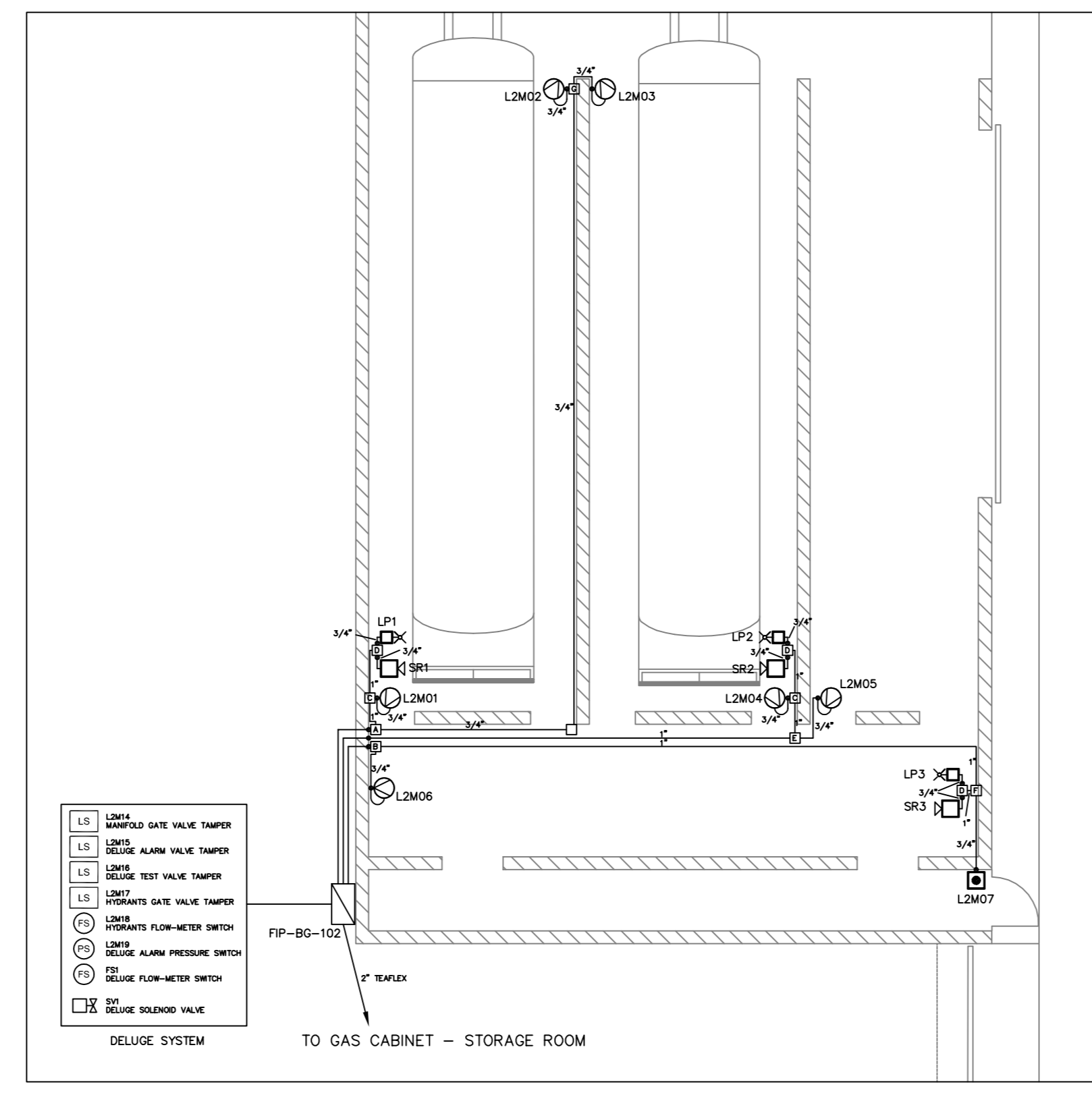
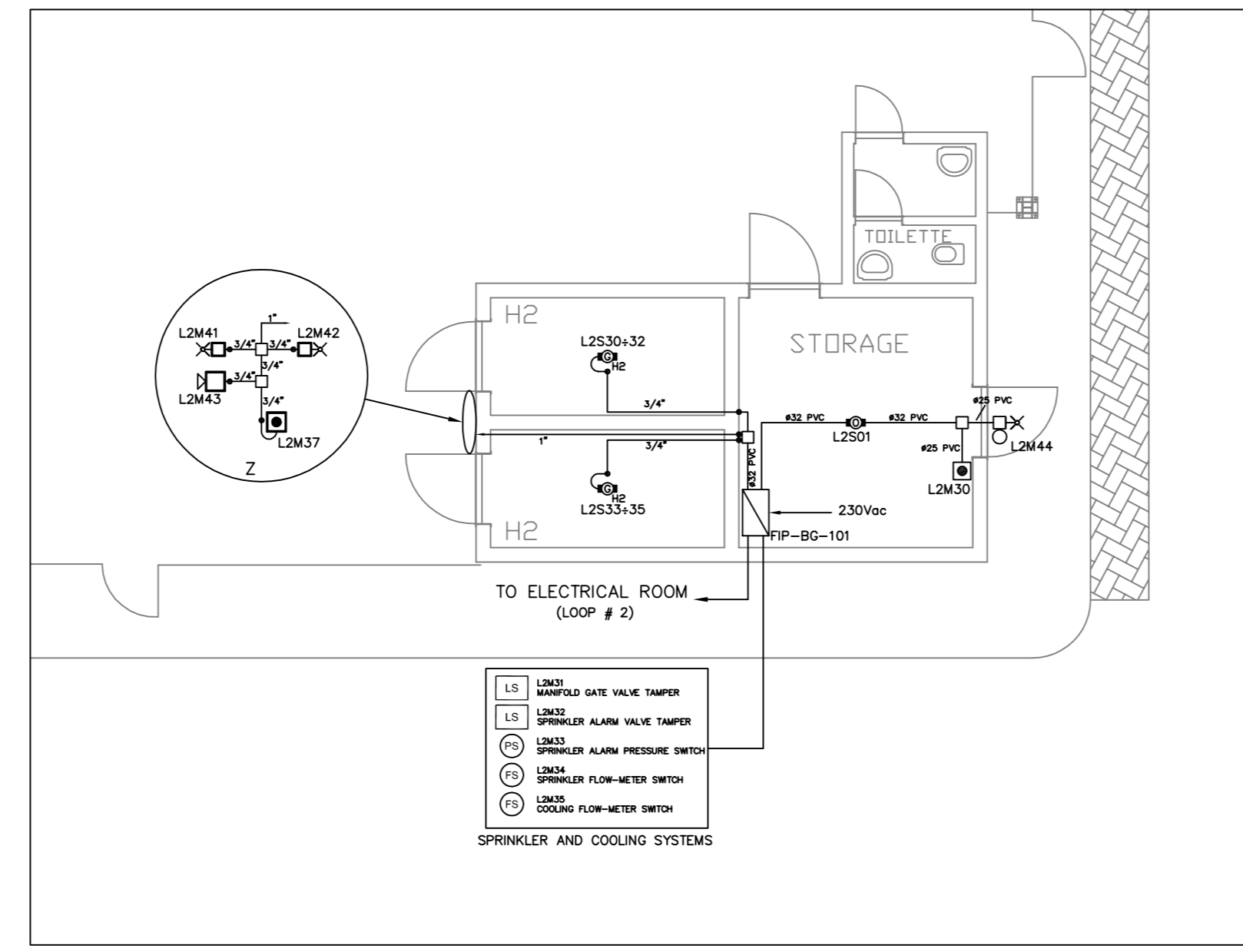


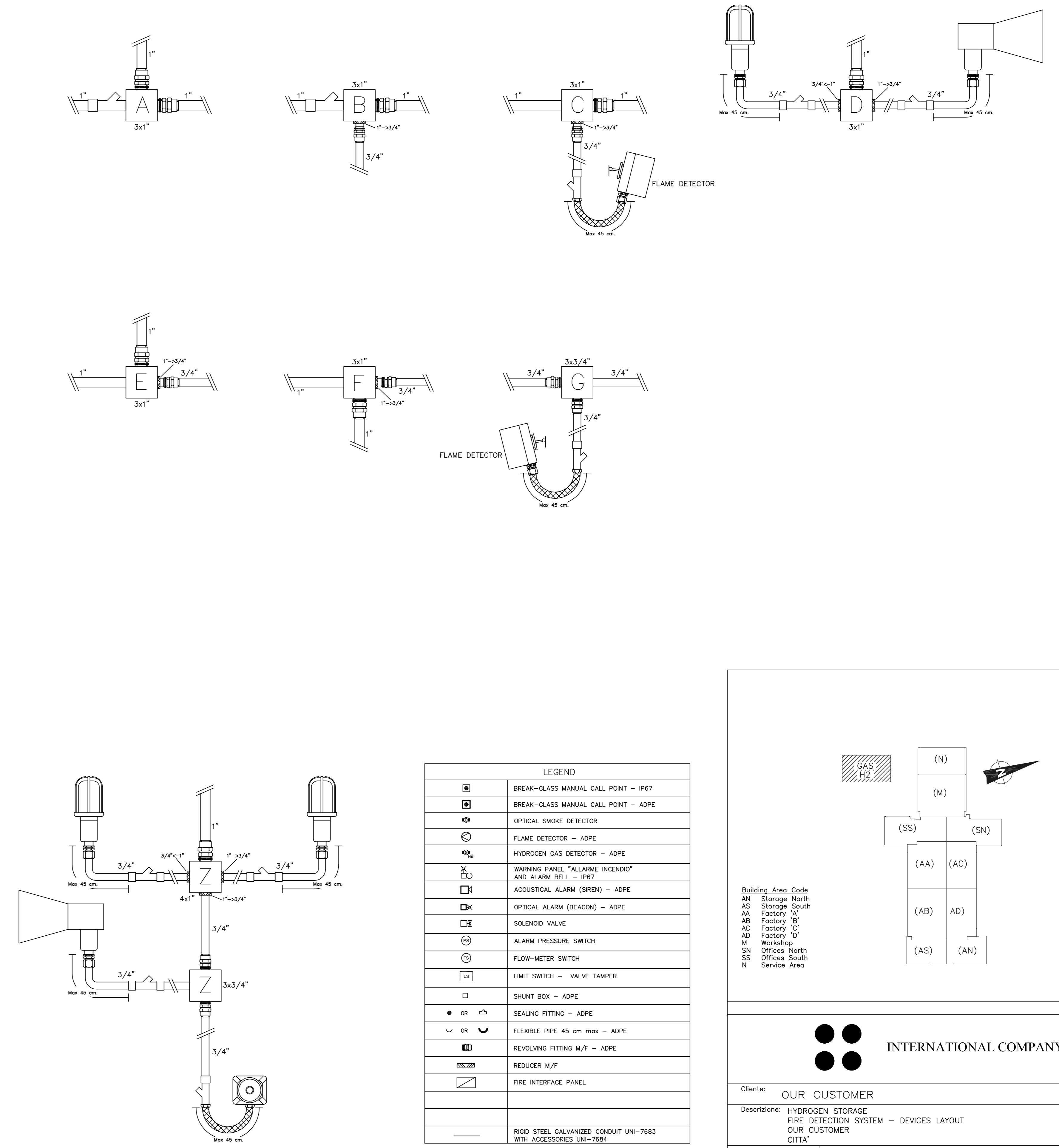
HYDROGEN STORAGE PLAN
SCALE 1:200



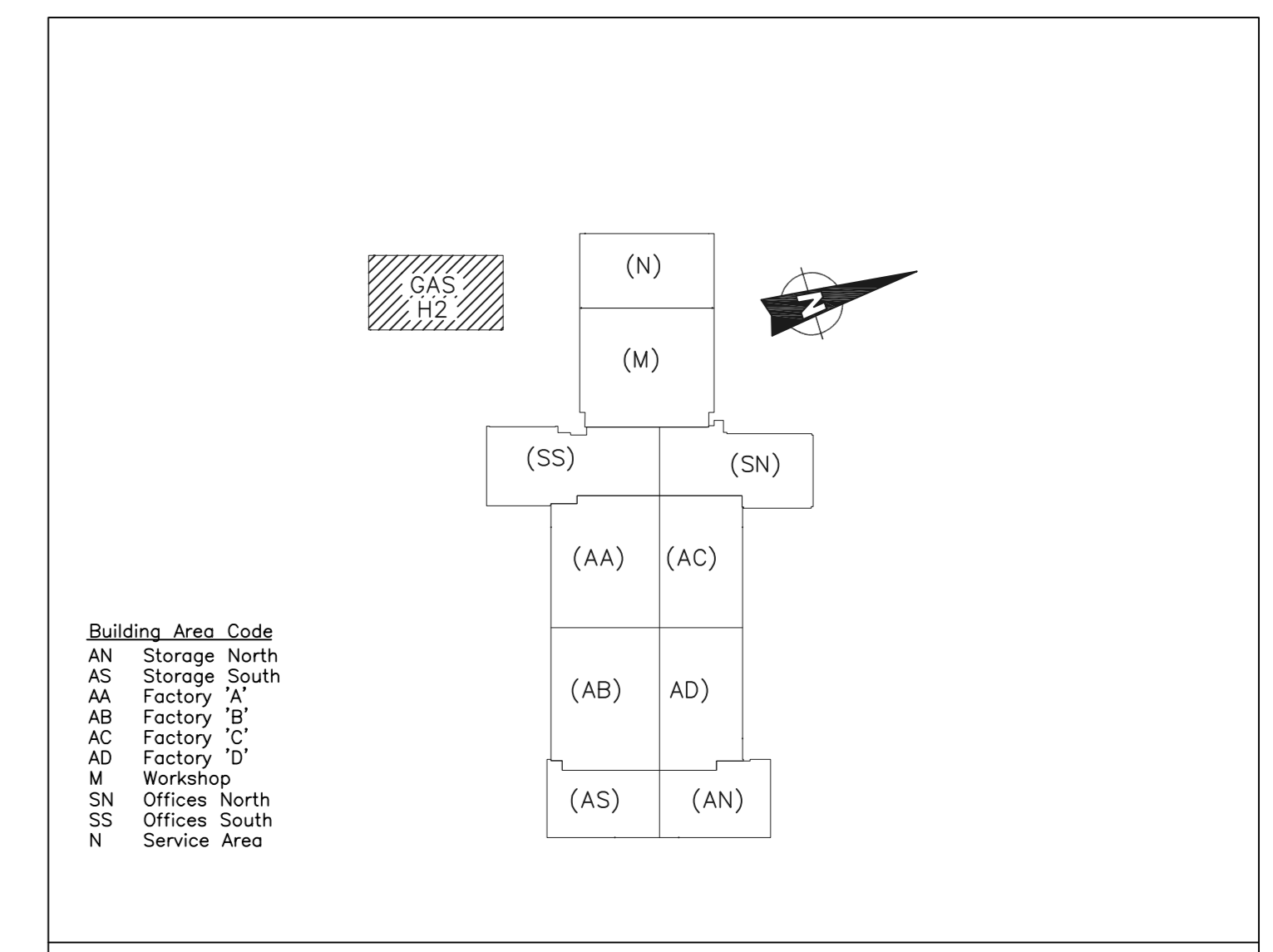
DETAIL "A"
SCALE 1:100



DETAIL "B"
SCALE 1:100



LEGEND	
[Symbol]	BREAK-GLASS MANUAL CALL POINT - IP67
[Symbol]	BREAK-GLASS MANUAL CALL POINT - ADPE
[Symbol]	OPTICAL SMOKE DETECTOR
[Symbol]	FLAME DETECTOR - ADPE
[Symbol]	HYDROGEN GAS DETECTOR - ADPE
[Symbol]	WARNING PANEL "ALLARME INCENDIO" AND ALARM BELL - IP67
[Symbol]	ACOUSTICAL ALARM (SIREN) - ADPE
[Symbol]	OPTICAL ALARM (BEACON) - ADPE
[Symbol]	SOLENOID VALVE
[Symbol]	ALARM PRESSURE SWITCH
[Symbol]	FLOW-METER SWITCH
[Symbol]	LIMIT SWITCH - VALVE TAMPER
[Symbol]	SHUNT BOX - ADPE
[Symbol]	SEALING FITTING - ADPE
[Symbol]	FLEXIBLE PIPE 45 cm max - ADPE
[Symbol]	REVOLVING FITTING M/F - ADPE
[Symbol]	REDUCER M/F
[Symbol]	FIRE INTERFACE PANEL
[Symbol]	RIGID STEEL GALVANIZED CONDUIT UNI-7683 WITH ACCESSORIES UNI-7684



INTERNATIONAL COMPANY

Cliente:	OUR CUSTOMER	Commissa:	1987
Descrizione:	HYDROGEN STORAGE FIRE DETECTION SYSTEM - DEVICES LAYOUT OUR CUSTOMER CITTA'	Disegno:	Deposito Idrogeno Imp. Rivelazione
Data:	04/12/2007	Riferimento:	Scala: 1:100
Rev.	04/12/07	Emesso per approvazione	XXX YYY
Rev.		Descrizione	DRAWN CHECKED

Dittosistemi si riserva la proprietà di questo disegno con la proibizione di riprodurlo o trasferirlo a terzi senza autorizzazione scritta.